

Anti-EpCAM mIgG2a Antibody(edrecolomab)

Product information

GM-87826AB-10	10 µg
GM-87826AB-100	100 µg
GM-87826AB-1000	1 mg

Antibody Information

Species Reactivity	Human
Clone	edrecolomab
Source/Isotype	Monoclonal Mouse IgG2a, kappa
Application	Flow Cytometry
Target	Detects EpCAM
Gene	EpCAM
Other Names	Ber-Ep4, BerEp4, DIAR5, EGP-2, EGP314, EGP40, ESA, HNPCC8, KS1/4, KSA, LYNCH8, M4S1, MIC18, MK-1, MOC-31, TACSTD1, TROP1
Gene ID	4072 (Human)
Background	EPCAM (epithelial cell adhesion molecule) gene is an important cell surface protein coding gene, mainly expressed in epithelial cells. EPCAM plays an important role in cell-cell adhesion, signal transduction and cell proliferation, which has attracted extensive attention in the study of various physiological and pathological processes.
Storage	Store at 2-8°C short term (1-2 weeks).Store at ≤ -20°C long term. Avoid repeated freeze-thaw.
Formulation	Phosphate-buffered solution, pH 7.2-7.4.
Endotoxin	< 1 EU/mg, determined by LAL gel clotting assay

Data Examples

Flow cytometry

H_EPCAM CHO-K1 Cell Line (Catalog # GM-C19181) was stained with Anti-EpCAM mlgG2a Antibody(edrecolomab) (Catalog # GM-87826AB) or isotype control antibody, followed by anti-Mouse IgG APC-conjugated Secondary Antibody.

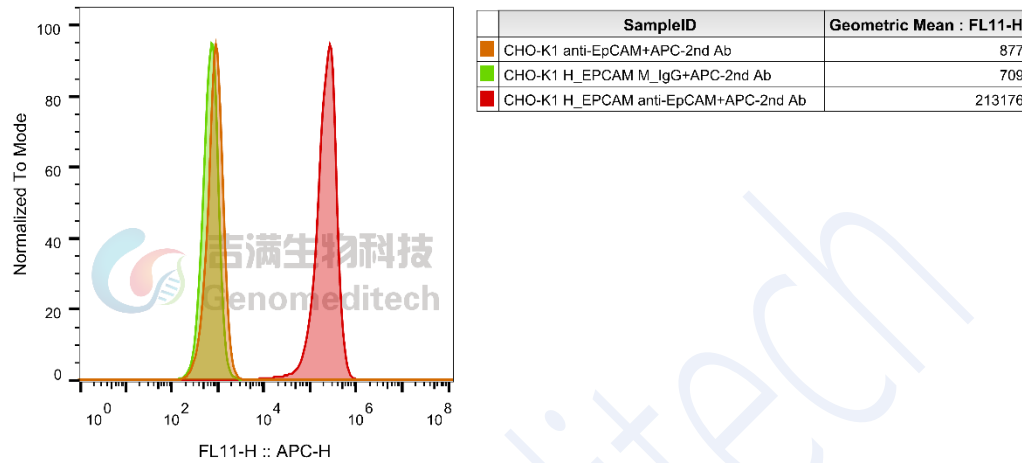


Fig. FACS